



European School of NeuroRadiology



World Federation of Interventional and Therapeutic Neuroradiology

COURSE IN FUNCTIONAL NEUROVASCULAR ANATOMY:

This Course in Functional Neurovascular Anatomy will be held next February 18-22, 2013 in Lisbon Portugal.

This is a joint course of the European Society of Neuroradiology (ESNR) and the World Federation of Interventional and Therapeutic Neuroradiology (WFITN).

The number of participants is limited to a total of 36.

However, this course is part of the ESNR Courses for Higher Qualification in Endovascular Interventional Neuroradiology and 24 places are reserved for these students. The remaining 12 places are open to ESNR or WFITN members who do not participate in the complete ESNR HQ cycle.

Typically, this course may be interesting to senior physicians who wish to refresh their knowledge in functional neurovascular anatomy.

Prerequisites for the participant:

ESNR and/or WFITN members has preferential status.

The applicant must be in training or be working with Interventional Neuroradiology.

The registration fee for the Functional Neurovascular Anatomy course is 600 Euros.

Included in the fee:

Course material

Lunches, coffee and course dinner

CME credits and course attendance certificate

Not included in the fee:

Travel to and from the training site

Hotel rooms

Breakfast and dinners except course dinner.

As there are limited rooms available, students are strongly encouraged to make room reservations early.

After the cut-off date, hotel room availability and pricing may vary.

To book these two types of accommodations the students must contact the local organization.

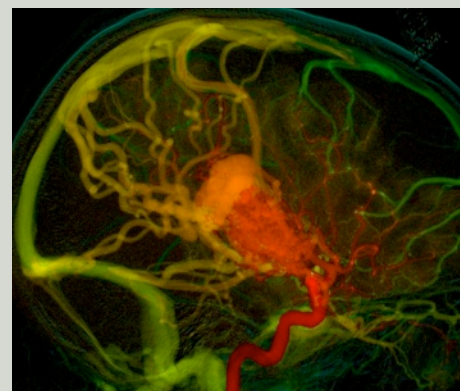
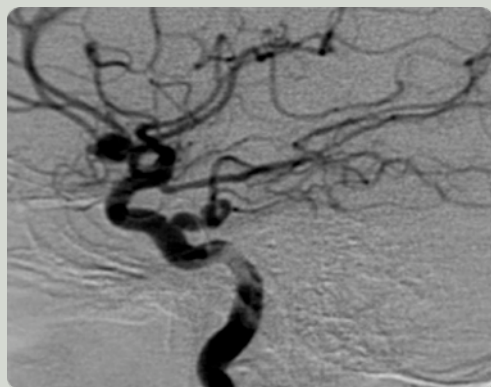
LOCAL ORGANIZATION:

Pedro Vilela

pvilela@hospitaldaluz.pt

Cláudia de Lemos
Silveira

csilveira@essaude.pt



FACULTY:

G. RODESCH, PARIS, FRANCE

M. SODERMAN, STOCKHOLM, SWEDEN

A. VALAVANIS, ZURICH, SWITZERLAND

J. BHATTACHARYA, GLASGOW, UK

S. BRACARD, NANCY, FRANCE

S. HOLMIN, STOCKHOLM, SWEDEN

P. MERCIER, ANGERS, FRANCE

V. PEREIRA, GENEVA, SWITZERLAND

P. VILELA, LISBON, PORTUGAL

Monday, February 18, 2013

14.00 – 14.15	Welcome and Introduction	
14.15 – 15.00	Anatomy of arteries and veins of the spine and spinal cord	G. Rodesch
15.00 – 15.30	Surgical 3D anatomy of arteries and veins of the spine and spinal cord	Ph. Mercier
15.30 – 15.45	Coffee Break	
15.45 – 16.30	Embryology and Anatomy of the Internal Carotid Artery	J. Batthacharya
16.30 – 17.00	Cavernous sinus: internal carotid artery and its branches. Arterial variations	M. Soderman
17.00 – 17.30	Surgical 3D anatomy of the cavernous sinus	Ph. Mercier

Tuesday, February 19, 2013

08.30 – 09.15	Ophthalmic artery: embryology, anatomy, arterial variations	S. Bracard
09.15 – 10.00	Cranio cervical junction: pharyngo-occipital arterial system: embryology (proatlantal 1 and 2, hypoglossal), anatomy, arterial variations	S. Holmin
10.00 – 10.15	Coffee Break	
10.15 – 11.00	Vertebro-Basilar system . PICA, AICA, SCA	P. Vilela
11.00 – 11.45	Intra axial vascularisation of the brain stem	S. Bracard
11.45 – 12.15	Basilar Tip perforating arteries	G. Rodesch
12.15 – 13.00	Surgical 3D anatomy of the perforators of the vertebro-PICA region	Ph. Mercier
13.00 – 14.00	Lunch	
14.00 – 14.45	Surgical 3D anatomy of the basilar tip and perforators	Ph. Mercier
15.00 – 16.00	Workshops	
16.00 – 16.15	Coffee Break	
16.15 – 17.15	Workshops	
17.15 – 18.15	Workshops	
	<i>Workshop 1 :</i>	<i>Spine and spinal cord vessels</i>
		<i>G. Rodesch</i> <i>M. Soderman</i>
	<i>Workshop 2 :</i>	<i>ICA – Cavernous sinus – Ophthalmic artery</i>
		<i>V. Pereira</i> <i>J. Batthacharya</i>
	<i>Workshop 3 :</i>	<i>ICA – VB perforators</i>
		<i>S. Bracard</i> <i>P. Vilela</i>

<i>Wednesday, February 20, 2013</i>		
08.30 – 09.30	Anterior Choroidal Artery and Posterior Cerebral Artery: Embryology, anatomy, arterial variations	G. Rodesch
09.30 – 10.15	Anterior Cerebral Artery and Middle Cerebral Artery	S. Bracard
10.15 – 10.30	Coffee Break	
10.30 – 11.15	Angioanatomy of the Circle of Willis. Variations and Perforating arteries	V. Pereira
11.15 – 12.00	External Carotid Artery: Embryology and vascular anatomy	J. Batthacharya
12.00 – 13.30	Lunch	
	<i>Free afternoon</i>	
	<i>Course dinner</i>	

<i>Thursday, February 21, 2013</i>		
08.30 – 09.15	Transcranial anastomoses and cranial nerve supply	M. Soderman
09.15 – 10.15	Angioarchitectonic organization of cortical and white matter arteries	A. Valavanis
10.15 – 10.30	Coffee Break	
10.30 – 11.15	Cerebral collateral circulation	A. Valavanis
11.15 – 12.00	Vascularization of the nasal fossa	A. Valavanis
12.00 – 13.00	Lunch	
13.30 – 14.30	Workshops	
14.30 – 15.30	Workshops	
15.30 – 15.45	Coffee Break	
15.45 – 16.45	Workshops	
	Workshop 1 : Circle of Willis	V. Pereira S. Holmin
	Workshop 2 : Cortical (neopallial) arteries	S. Bracard P. Vilela
	Workshop 3 : ICA - ECA anastomosis and cranial nerve supply	G. Rodesch M. Soderman

<i>Friday, February 22, 2013</i>		
08.30 – 09.30	Intracranial Venous system: Cortical veins and dural sinuses: supra and infratentorial dispositions. Normal vascular anatomy and variations	P. Vilela
09.30 – 10.30	Intracranial Venous system: deep cerebral veins and transmedullary system	S. Bracard
10.30 – 10.45	Coffee Break	
10.45 – 11.45	Surgical 3D venous anatomy	Ph. Mercier
11.45 – 12.45	Course evaluation	
13.00 – 14.00	Lunch	
	End of the course	

COURSE VENUE: HOSPITAL DA LUZ - LISBON

Hospital da Luz is located at Avenida Lusíada n.º 100,

alongside Colombo Shopping Center and near Estádio da Luz in Lisbon, with the following coordinates: latitude 38° 45' 22.64" N and longitude 9° 11' 34.99" W.

How to get there?

Underground

The underground is the best and fastest way to reach the hospital and congress venue.

The underground: **Linha Azul** (Blue Line), **Colégio Militar / Luz** station is located around 150 meters from the Hospital. (see the underground map in the next page)

Car

For those coming from the Center of Lisbon or from the North via the A1, use accesses via the Segunda Circular, North-South Expressway, IC 19, CRIL, Av. Pontinha, take Av. Lusíada and go in the direction of Colombo Shopping Center. The Hospital da Luz will appear on your right after the shopping center.

For those coming from the South via the A2, follow the North-South Expressway in the direction of the Segunda Circular and take the direction of Monsanto. Exit at the Colombo Shopping Center. Hospital da Luz will appear on your right after the shopping center.

A **paid car park** is available with approximately 500 places and is open 24 hours. It is located on Levels -2 and -3 of the Hospital building.

Taxis

There is a taxi rank alongside the entrance to the Hospital and another near Colombo Shopping Center, located approximately 150 meters from the Hospital.

Buses

For those coming by bus, the nearest stop serving the Hospital is 150 meters away, south of the main entrance. The Carris company buses that stop at Hospital da Luz are:

- **Number 729** (Algés / Bairro Pe. Cruz)
- **Number 765** (Av. Colégio Militar - Metro/ R. Ortigão Ramos)
- **Number 799** (Av. Colégio Militar – Metro / Alfragide Norte)



COURSE VENUE: HOSPITAL DA LUZ LISBON



ACCOMMODATIONS:

The course organization provides two types of accommodations at special rates: Hotel Tivoli Jardim and Residências Casas da Cidade.

As there are limited rooms available, participants are strongly encouraged to make room reservations early. After the cut-off date, hotel room availability and pricing may vary.

To book these two types of accommodations the students must contact the **local organization**.

Hotel Tivoli Jardim

The Tivoli Jardim is close to Avenida da Liberdade, the main avenue in Lisbon and right next to the Tivoli Lisboa and the historical centre. It is approximately 7 Km from Lisbon Airport. Public transport is available right next to the hotel. The Metro station is 150 metres and buses and taxis can be caught right outside the hotel. The central location allows easy access to most of the city's points of interest, its famous neighborhoods, monuments and museums.

The accommodation rates for the Hotel Tivoli Jardim are 90€ (single room) and 100€ (double room) per night

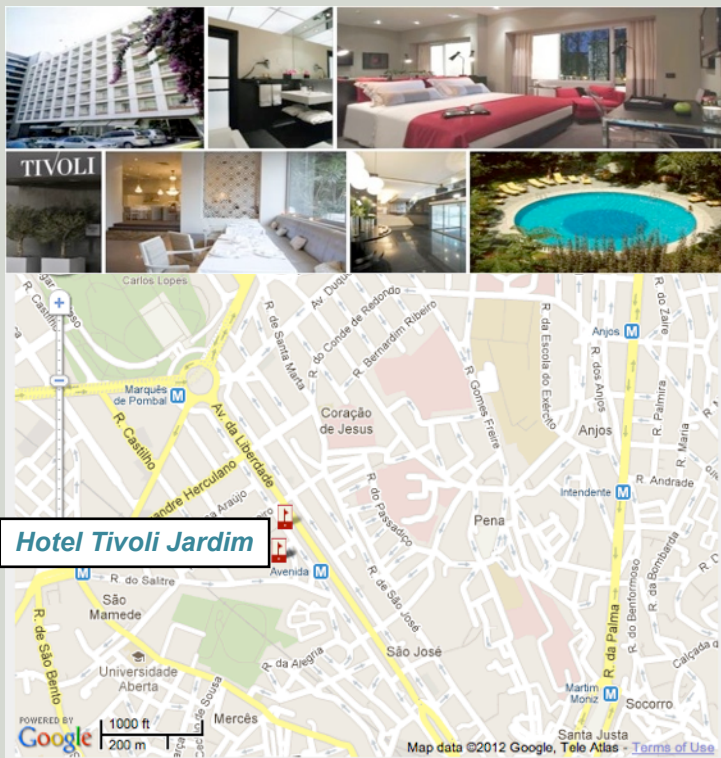
Address: Rua Júlio César Machado, 7/9
1250-135 Lisboa, Portugal
GPS: N 38° 43' 13,24" W 9° 8' 50,21"
Tel: (+351) 213 591 000
Fax: (+351) 213 591 245

Residências Casas da Cidade

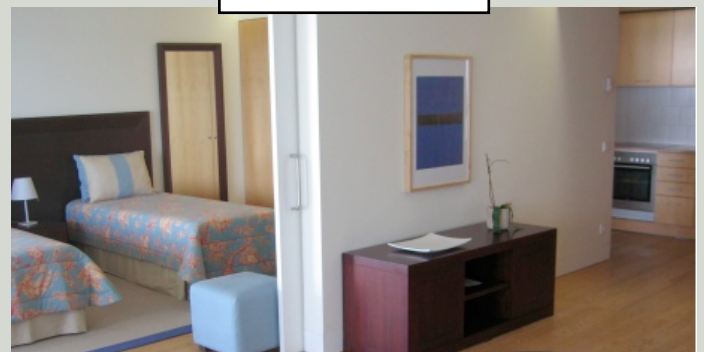
These apartments are located in the building just opposite from the hospital.

The accommodation rates for the residências Casas da Cidade is 70€ (double room) per day (breakfast included).

The participants may also choose to book by themselves the hotel accommodation in other hotels.



Casas da Cidade





European School of NeuroRadiology



World Federation of Interventional and Therapeutic Neuroradiology

LISBON



SEE YOU NEXT FEBRUARY !

